

Knob Ridge/Gum Creek Walk



Section 1 (Track under telephone posts to Fowlers Creek)

The first section is dominated by black bluebush and prickly wattles.

Several chenopods, like *Atriplex conduplicata* and *Atriplex vesicaria* (bladder saltbush) are relatively rare. (Most of them are juveniles growing on and along the track. On the track grow mainly *Sclerolaena* sp., like pale povertybush, short-winged copperburr, silky copperburr etc.

Some tall groundsels (*Senecio* sp.) are obvious to see.

The common mammals are red and western grey kangaroos and euros. The bird diversity is low but common species are galah, chestnut-crowned babbler, Australian magpie and Australian raven.

Section 2 (Fowlers Creek)

There are river red gums along both banks of the creek and also in the creek bed and there is much lemon scented grass on the banks.

The vegetation along the creek includes several western boobiallas, Mitchell grass 37 131 TDs31 TDc should see wedge-tailed eagle, collared sparrowhawk, Nankeen kestrel, galah, little corella, mallee ringneck, mulga parrot, striated pardalote, southern whiteface, spiny-cheeked honeyeater, white-plumed honeyeater, crimson chat, willie wagtail, Australian raven, apostle bird, and tree martin.

Section 3 (Walk on top of ridge)

Pearl and black bluebush dominate the vegetation on top of the ridge.

Other plants on the ridge are velvet potato-bush, silver-tails and many different kinds of *Sclerolaena* sp.

On the later hills there are quite a few acacias scattered over the ridge.

Euros are common and you should see the following birds: Nankeen kestrel, white-winged fairy-wren, Hall's babbler, black-faced woodswallow, and Australian raven.

Section 4 (Cross from ridge to Gum Creek)

The beginning of this section is also dominated by pearl and black bluebush progressively changing to an area with increasing amounts of pale and long-spined copperburrs and then changing into an area dominated by bladder saltbush.

The little creek leading into Gum Creek is dominated by black bluebush, emubush, some quandong, velvet potato-bush, bladder saltbush, *Sclerolaena* sp., Belahs, Rosewood, Mulgas and Dead Finish.

Red kangaroos and euros are common and you may see a red fox. The common birds include wedge-tailed eagle, crested pigeon, white-winged fairy-wren, singing honeyeater, chirruping wedgebill, white-browed babbler, chestnut-crowned babbler, and black-faced woodswallow.

Section 5 (Gum Creek)

There are three distinctive vegetation communities to be found as you progress along the creek:

1. The first part of this section is dominated by prickly wattle, dead finish, black bluebush, thorny saltbush, lemon-scented grass and velvet potato-bush.
2. The section vegetation community includes black bluebush and river red gum, lemon-scented grass, bladder and thorny saltbush and fruit-salad plant.
3. River red gums are present only where Gum Creek leads into the lake.

Common birds are crested pigeon, galah, variegated fairy-wren, white-

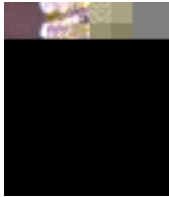
winged fairy-wren, southern whiteface, spiny-cheeked honeyeater, yellow-throated minor, white-plumed honeyeater, crimson chat, chestnut-crowned babbler, willie wagtail, and Australian raven.

Section 6 (The lake)

here are many river red gums growing around the lake.

In the dried out parts of the lake-bed is much fruit-salad plant, mexican poppy and common sneezeweed.

Common birds are hoary-headed grebe, Australian shelduck, Pacific black duck, Eurasian coot, white-faced heron, masked lapwing, black-fronted dotterel, little corella, mallee ringneck, mulga parrot, variegated fairy wren, white-plumed honeyeater, magpie lark, black-faced cuckoo-shrike, ground cuckoo-shrike, Australian magpie, Australian raven, apostle bird, welcome swallow and tree martin.



Section 7 (Gum Creek back to Station)

Following the creek, section 3 is dominated by river red gum, western

Ruby Saltbush (*Enchylaena tomentosa*)
Low Bluebush (*Maireana astrotricha*)
Black Buebush (*Maireana pyramidata*)
Pearl Bluebush (*Maireana sedifolia*)
Cottony Saltbush (*Rhagodia gaudichaudiana*)
Thorny Saltbush (*Rhagodia spinescens*)
Buckbush (*Salsola kali* var. *kali*)

AMARANTHACEAE

Silver-tails (*Ptilotus obovatus* var. *obovatus*)

PAPAVERACEAE

Mexican Poppy (*Argemone ochroleuca*)

PITTOSPORACEAE

Butterbush (*Pittosporum phylliraeoides*)

MIMOSACEAE