

CPHCE Digital Health Newsletter

September – October 2021



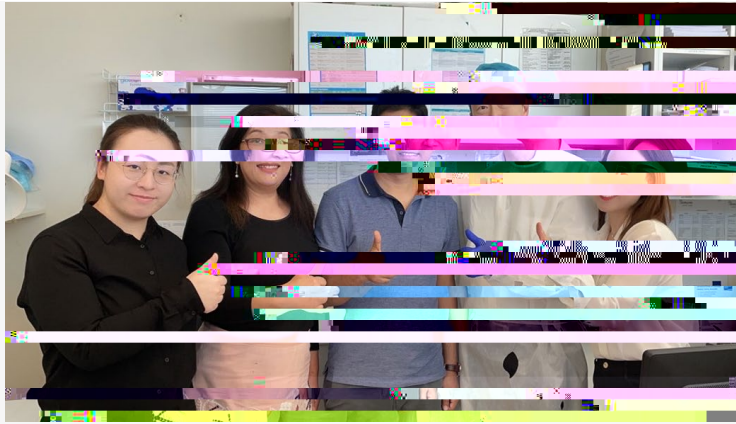
Highlights

- CPHCE Annual Forum was successfully held on Wednesday 13th October 2021 at 9am, thank you all for attending the forum. For more information please scroll down this email to the 'Events' section.
- EquityFest 2021: The Future of Health Equity – Learning from a pandemic.
EquityFest is an annual event to progress the equity agenda in Sydney Local Health District where we reflect, engage and explore, enable action, and celebrate. This year, EquityFest will be held online over three sessions on **Thursday 18 November, Thursday 25 November and Thursday 9 December** in partnership with communities, consumers, government and non-government organisations. HERDU have been leading the planning of EquityFest, in partnership with an Advisory Committee consisting of over 40 consumer, community, government and non-government representatives.
 - I. Session 1: What have we done? - Thursday 18 November 12pm - 2pm
Invited speakers will present examples of what has been built and learned in Sydney Local Health District in response to the pandemic, including structures, new relationships, new services and programs, new ways of working, or new ideas. This will be followed by open discussion.
 - II. Session 2: What have we learned? - Thursday 25 November 12pm - 2pm
Invited speakers will reflect and build on the previous week, and present views on what to maintain, how can we strengthen our gains, and what else is needed. This will be followed by open discussion.
 - III. Session 3: What do we need to do? - Thursday 9 December 12pm - 2pm (a workshop event)
The session will be an opportunity to collaboratively identify what we need to do to help shape and action the future of health equity in Sydney Local Health District.

EquityFest is a free event. Registration is now at this [link](#)

Projects

- Bilingual Community Navigator (BCN) in general practices of Sydney has been kicked off in Healthpac Medical Centre Hurstville on 26th October 2021. It is first time this intervention is happening in general practice setting of Australia where a BCN is placed in the practice helping the patients from the culturally and linguistically diverse background suffering from chronic illnesses smoothly access health and social care services. The intervention will also start in other two general practices of Sydney in next week.



- Mindgardens Clinical Pathways is part of the larger Mindgardens Health Pathways project in the Eastern Sydney region. The project focuses on the shared care between mental health services and GPs of people with severe mental illness who have been prescribed Clozapine. It is a trial of a web based shared-care plan that is accessible to the GP, mental health providers and the patient that is designed to improve communication and ensure that patients don't miss out. The care plan and other guides have been developed and we hope to commence recruitment of participants before the end of November. Please contact Jane Taggart taggart@unsw.edu.au for more information.

Publications

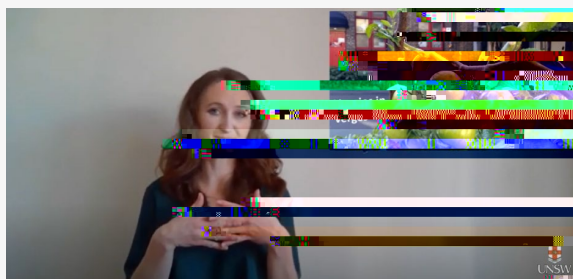
- [Interventions to promote access to eyecare for non-dominant ethnic groups in high-income countries: a scoping review](#)
By Aryati Yashadhana & more
- [How equitable are the distributions of the physical activity and accessibility benefits of bicycle infrastructure?](#)
By Chris Standen & more
- [Chief health officers are in the spotlight like never before. Here's what goes on behind the scenes](#)
By Patrick Harris, Aryati Yashadhana & Evelyne de Leeuw
- [Online training in evidence-based medicine and research methods for GP registrars: a mixed-methods evaluation of engagement and impact](#)
By Hania Rahimi-Ardabili, Catherine Spooner, Mark Harris, Michael Tam, Siaw-Teng Liaw, Nicholas Zwar & more
- [Response to language barriers with patients from refugee background in general practice in Australia: findings from the OPTIMISE study](#)
By Shoko Saito, Mark Harris & more
- [Towards negotiation: A RAMESES narrative review of social enterprise to support sustainability in Sport for Social Change \(S4SC\)](#)
By Evelyne de Leeuw & more
- [Pandemic-related racial discrimination and its health impact among non-Indigenous racially minoritized peoples in high-income contexts: a systematic review](#)
By Aryati Yashadhana
- [Systems thinking for health equity](#) BEE Report
By David Lilley
- [Consocrats and Pathocrats: The Prequel, Quel, and Sequel: A Response to the Recent Commentaries](#)
By Evelyne de Leeuw
- [Improving access to primary health care: a cross-case comparison based on an a priori program theory](#)
By Catherine Spooner, Mark Harris & more

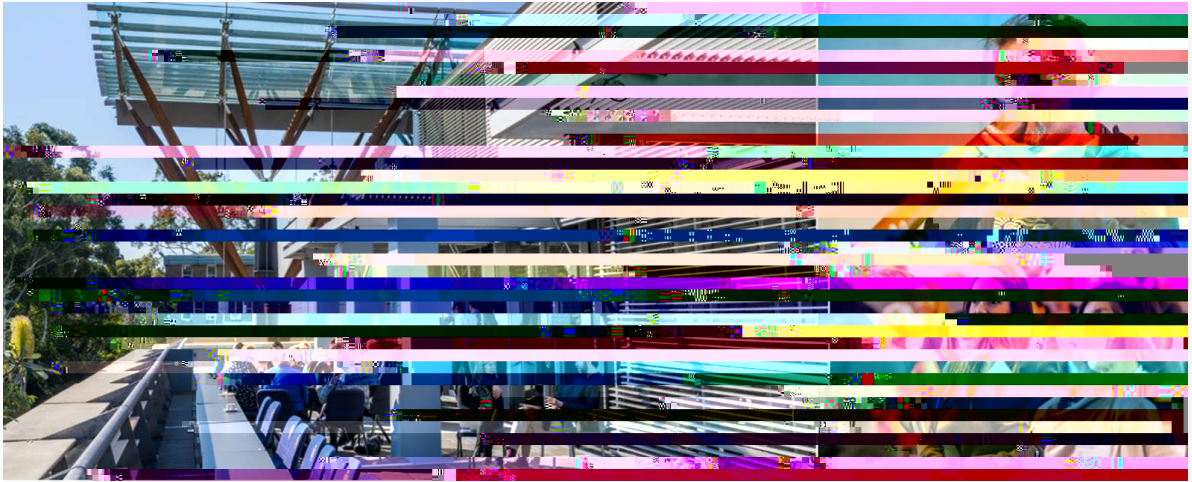
People

Former PhD student Uday Narayan Yadav has completed his PhD with CPHCE and will be commencing as a Research Fellow Position (Level-B) at Australian National University, Canberra. He will be managing a 3-year Chronic Disease Management Program for Aboriginal and Torres Strait Islander peoples.

Communication & Education

- PhD student Kristina Ulm won the ASPIRE prize in this year's '3 Minute Thesis' competition, the ASPIRE prize is awarded by Liverpool Boys High School students. Kristina also gave her talk on [Veggies in verges - Growing food on footpath](#)





Follow us!



Copyright © 2021 UNSW Sydney. All Rights Reserved.
Cricos Provider Code 00098G